



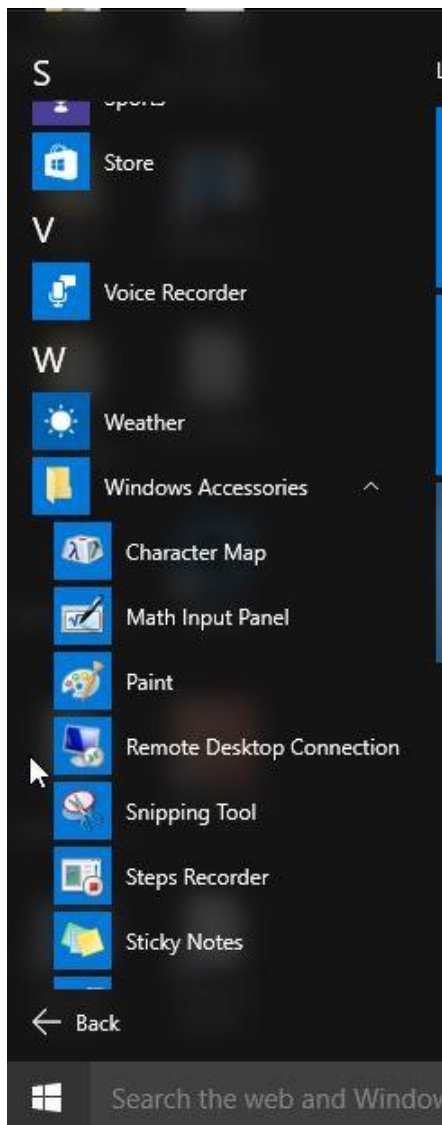
## IT FAQ: How do I connect to my office computer using remote desktop (Windows 10)?

Before attempting to connect to your office computer, you must first have the following:

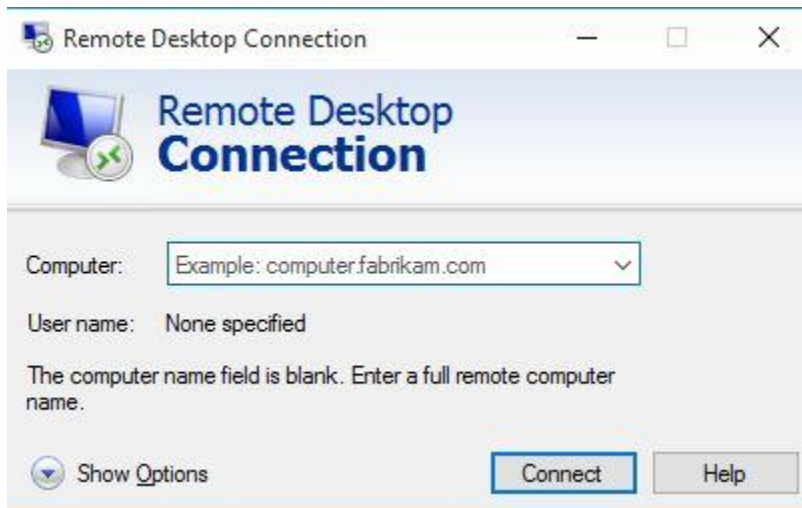
If you are off-campus, start up [TAMU Connect](#) and log in with your university (TAMU) credentials.

- Note: If you have trouble with connecting to VPN, contact CIS Help Desk at (979) 845-8300 for 24-hour support.
- The IP address of the computer you are trying to connect to. (Ex. 128.194.17x.xxx)

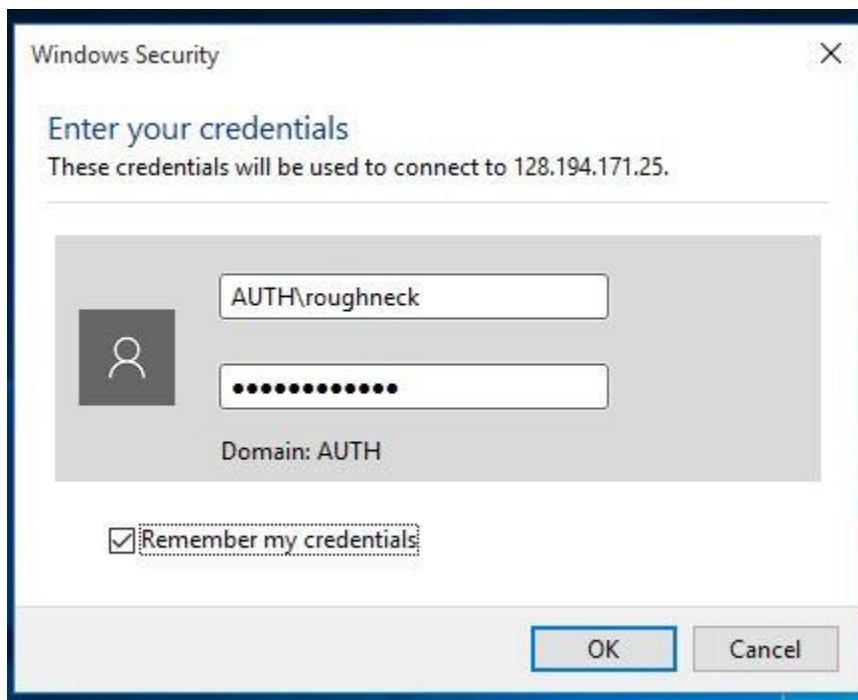
1. Click on **Start > All apps > Windows Accessories > Remote Desktop Connection.**



2. Enter your **IP address** in the **Remote Desktop Connection** window. (Ex. 128.194.17x.xxx)

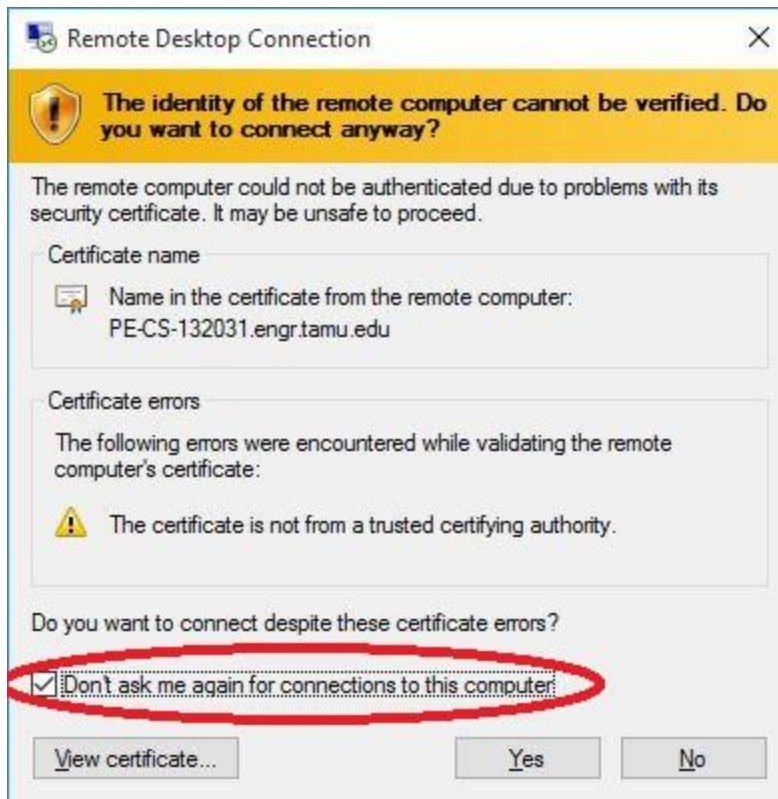


3. Click on **Connect**.



4. You will be prompted to enter your NetID and NetID password to login.

- Note: Be sure to put AUTH\ in front of your NETID in the username field.



- Note: You can choose the check box next to “**Don't ask me again for connections to this computer**” and click **Yes** and you will not see this pop-up each time you remotely connect to your computer.