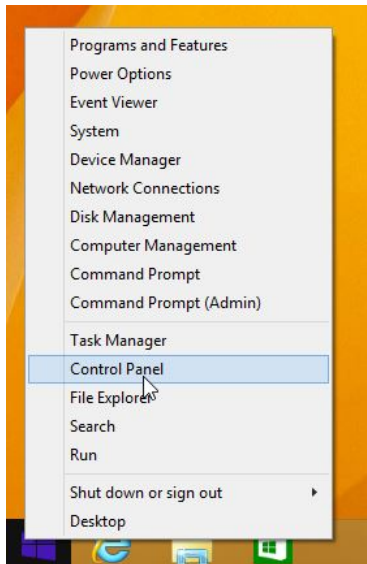


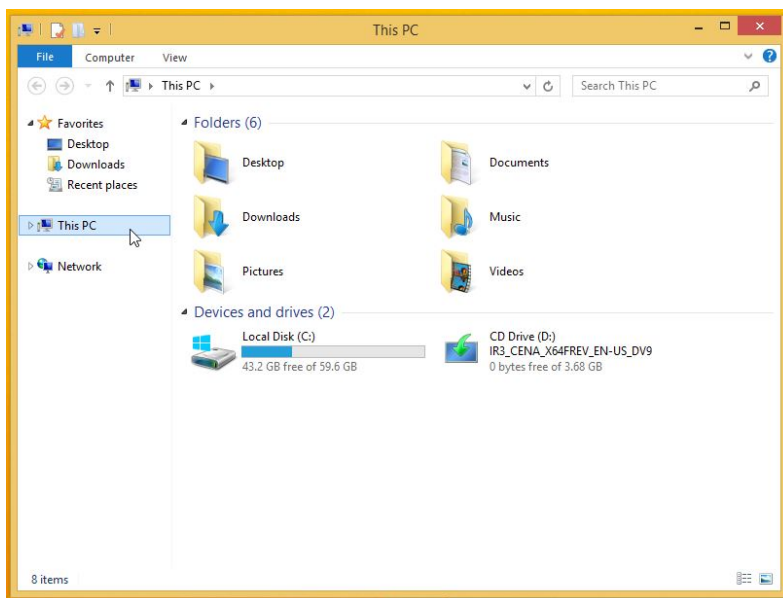


IT FAQ: How do I map a network drive on my computer (Windows 8.1)?

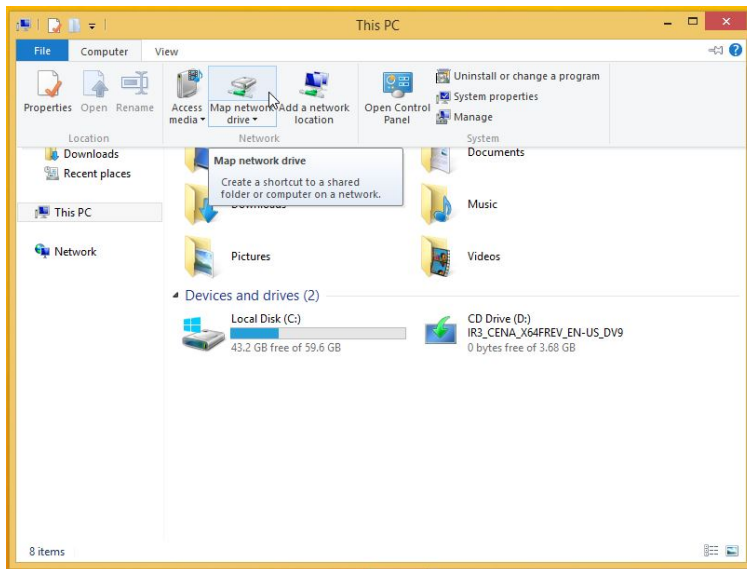
1. If you are off-campus, start up [TAMU Connect](#) and log in with your university (TAMU) credentials.
 - a. Note: If you have trouble with connecting to VPN, contact CIS Help Desk at (979) 845-8300 for 24-hour support.
2. Open **Windows Explorer**. To do this right click on **Start** button and select **File Explorer**.



3. Click on **This PC** on the left hand side.



4. Next, click on **Computer** at the top and then click on **Map network drive**.



5. Under the folder path type one of the following depending on your affiliation with the College of Engineering:

Undergrad Students: \\coe-fs.engr.tamu.edu\ugrads*(your NetID)*

Graduate Students: \\coe-fs.engr.tamu.edu\grads*(your NetID)*

Staff: \\coe-fs.engr.tamu.edu\staff*(your NetID)*

Faculty: \\coe-fs.engr.tamu.edu\faculty*(your NetID)*

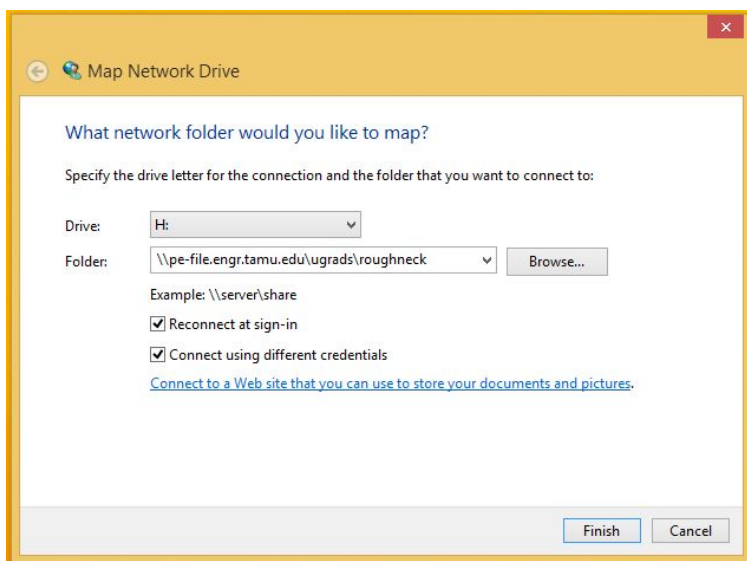
The shares drive mappings are as follows:

ENGR: \\coe-fs.engr.tamu.edu\ENGR

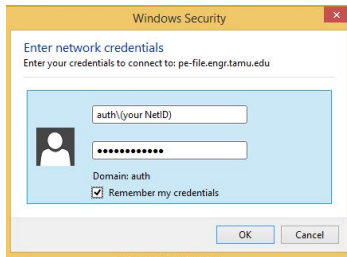
StudentShares: \\coe-fs.engr.tamu.edu\StudentShares

Research: \\coe-fs.engr.tamu.edu\Research

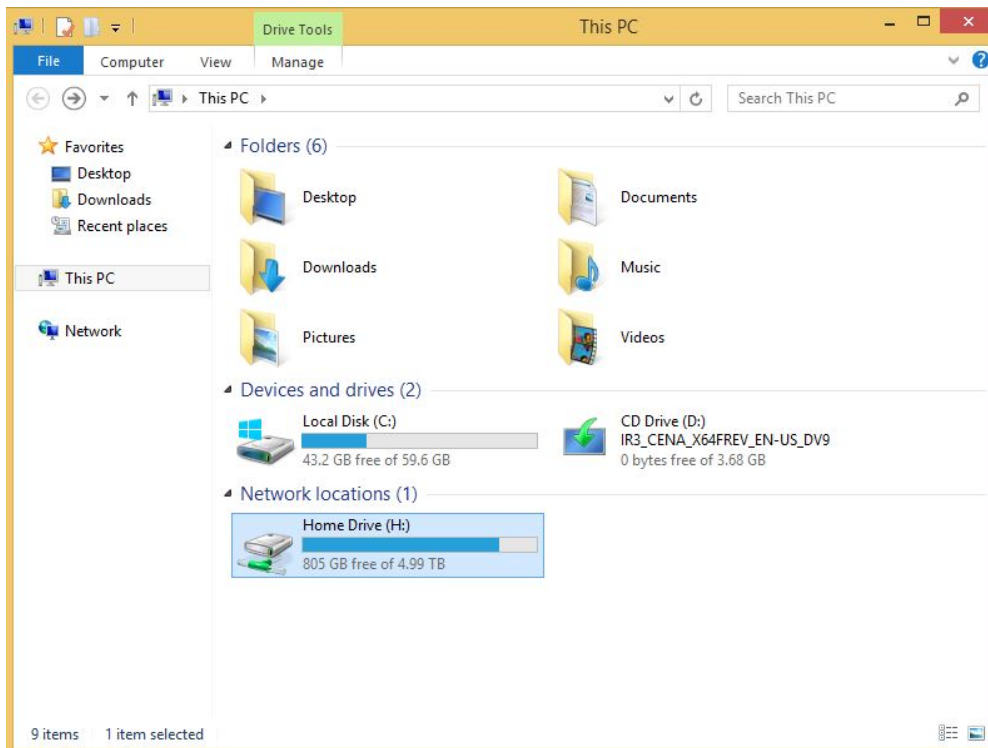
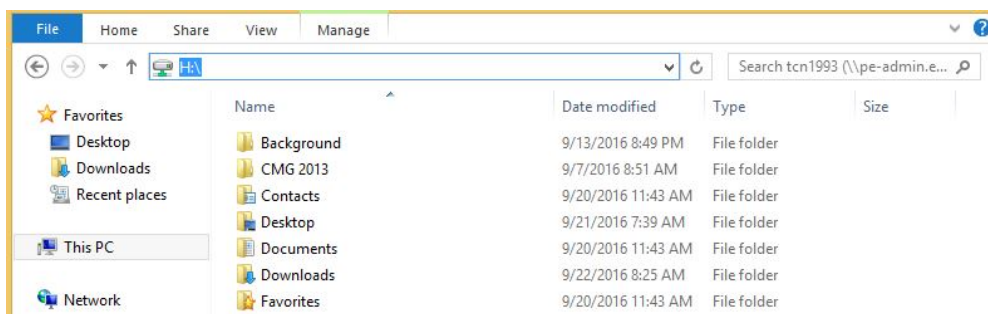
6. Click **Finish**.



7. Now you will get the **Windows Security** prompt below. For **Username** enter **AUTH**(your NetID) and for the **Password** enter **your NetID password**.



8. Click OK on the prompt above. Now you should have access to all of your network files as shown below.



Post only school-related files on the file server (i.e., into your H:\My Documents or Desktop folders and anywhere on S:\ drive.) Any movies, music or other non-school-related files are subject to unannounced deletion.