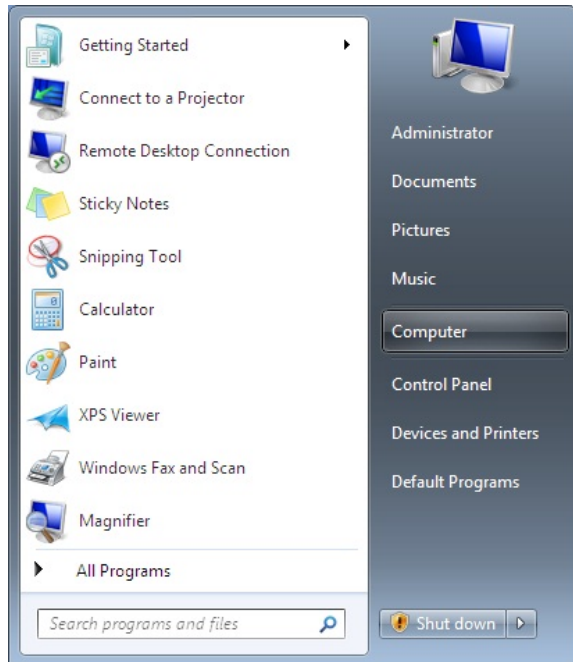


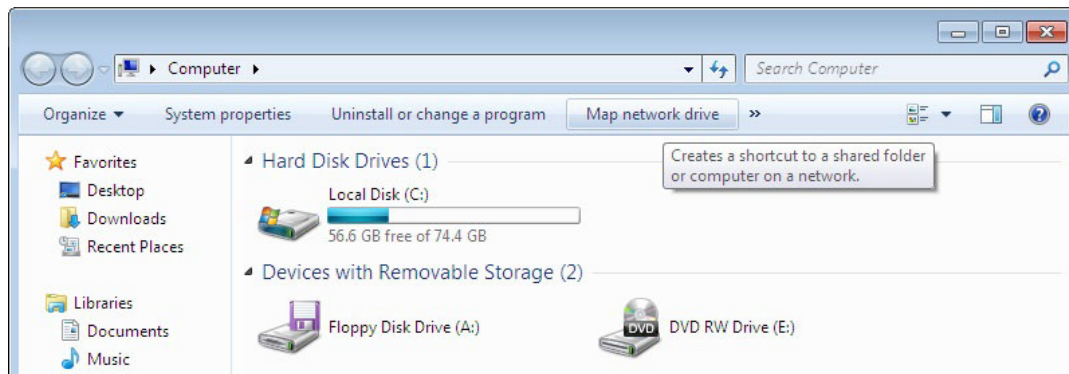


IT FAQ: How do I map a network drive on my computer (Windows 7)?

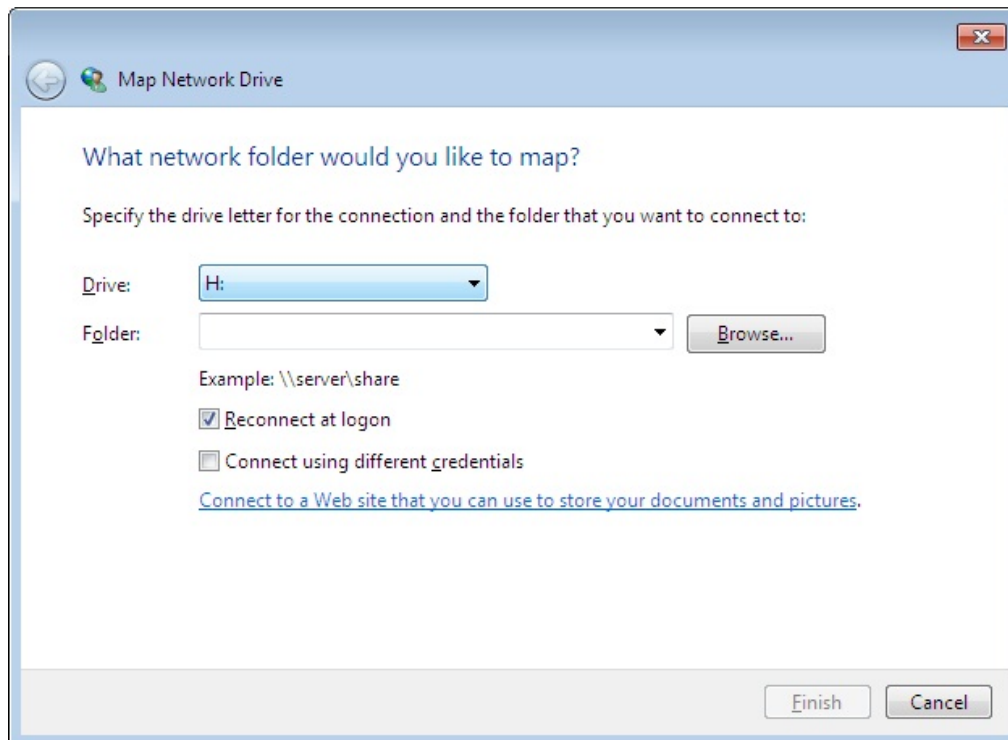
1. If you are off-campus, start up [TAMU Connect](#) and log in with your university (TAMU) credentials.
 - a. Note: If you have trouble with connecting to VPN, contact CIS Help Desk at (979) 845-8300 for 24-hour support.
2. Open **Windows Explorer**. To do this right click on **Start** button and select **Computer**.



3. Open **Map Network Drive** at the top of the explorer window.



4. Select a drive letter for the network drive. You can pick any letter (for example **H:** for 'home').



5. Under the folder path type one of the following depending on your affiliation with the College of Engineering:

Undergrad Students: \\coe-fs.engr.tamu.edu\ugrads\<(your NetID)

Graduate Students: \\coe-fs.engr.tamu.edu\grads\<(your NetID)

Staff: \\coe-fs.engr.tamu.edu\staff\<(your NetID)

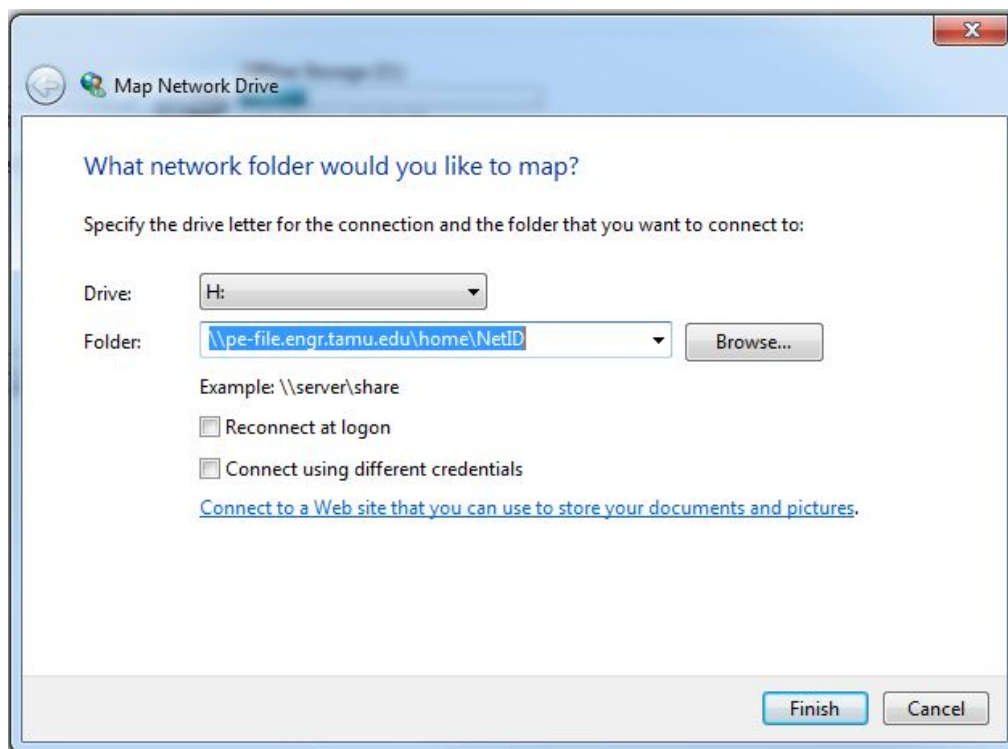
Faculty: \\coe-fs.engr.tamu.edu\faculty\<(your NetID)

The shares drive mappings are as follows:

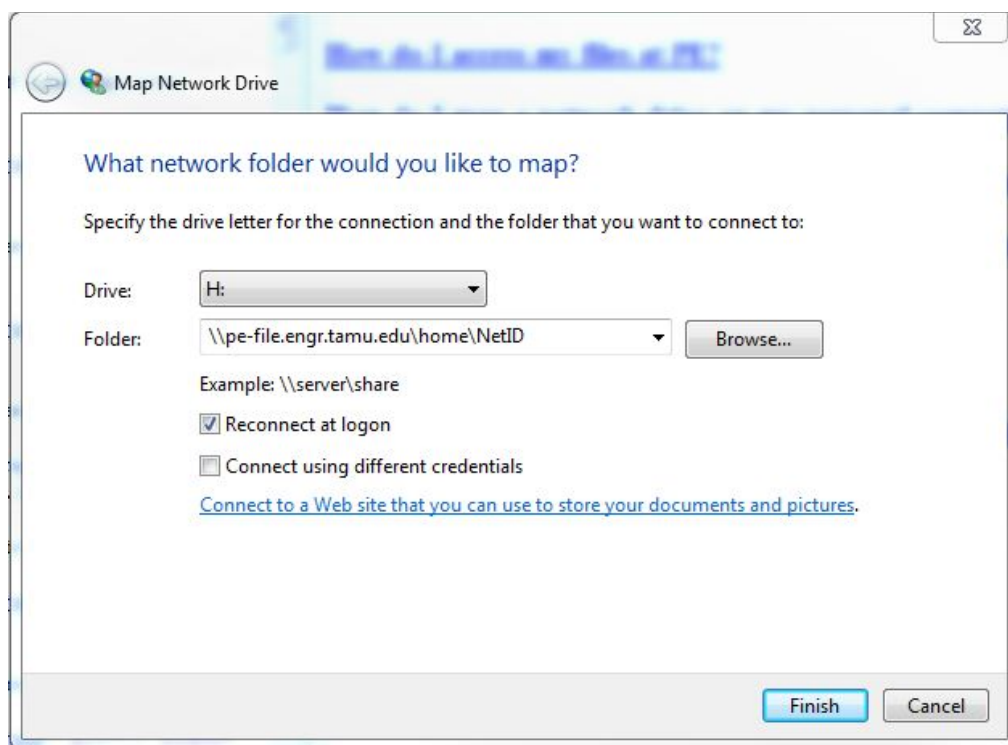
ENGR: \\coe-fs.engr.tamu.edu\ENGR

StudentShares: \\coe-fs.engr.tamu.edu\StudentShares

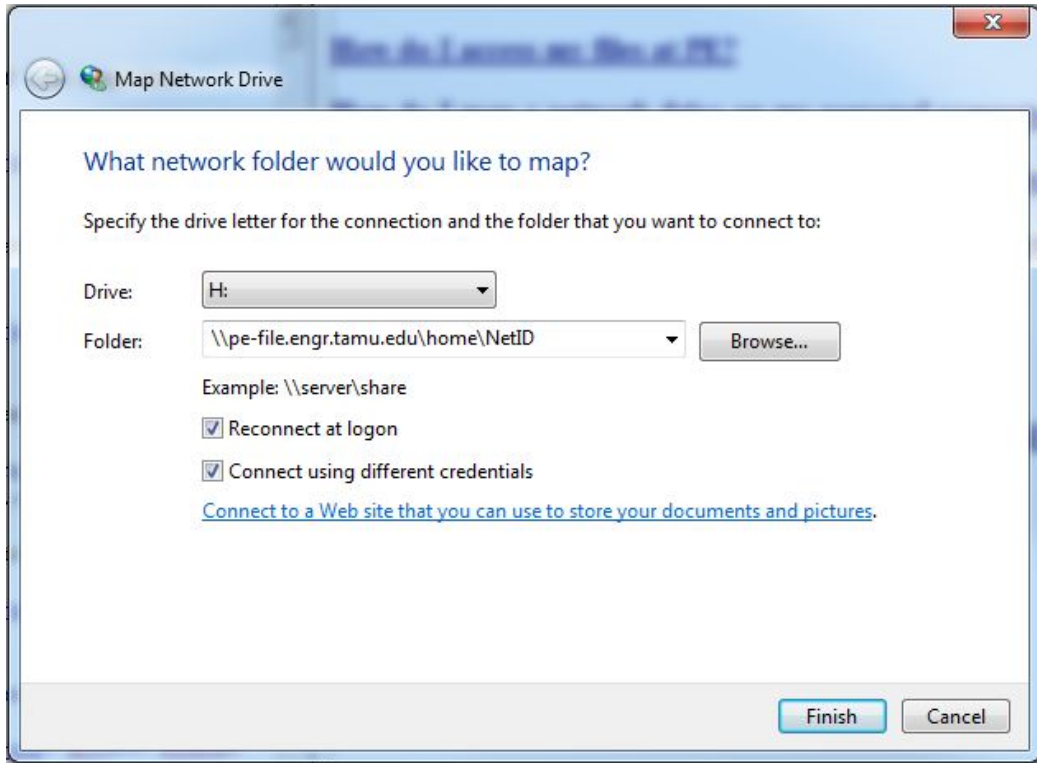
Research: \\coe-fs.engr.tamu.edu\Research



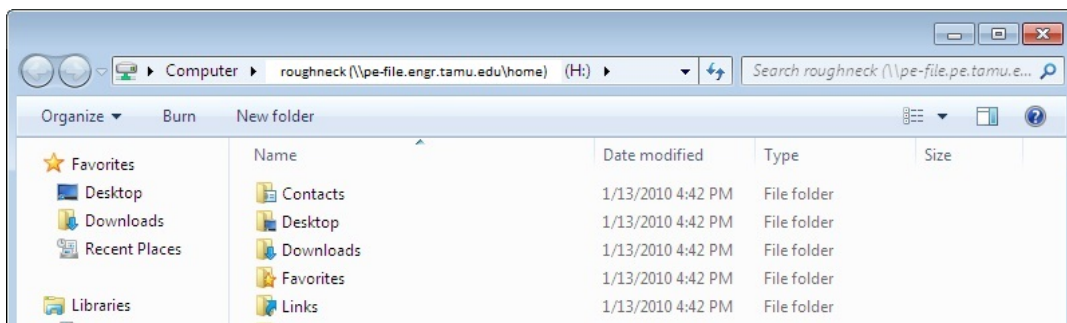
6. Select **Reconnect** at logon.



7. Click on '**connect using different credentials**' and for the username type in: **AUTH**(NetID) and your NetID password. Select **Okay**, then **Finish**.



8. Now you should have access to all of your network files as shown below.



Post only school-related files on the file server (i.e., into your H:\My Documents or Desktop folders and anywhere on S:\ drive.) **Any movies, music or other non-school-related files are subject to unannounced deletion.**