



### IT FAQ: How do I map a network drive on my computer (Mac OSX)?

1. If you are off-campus, start up [TAMU Connect](#) and log in with your university (TAMU) credentials.
  - a. Note: If you have trouble with connecting to VPN, contact CIS Help Desk at (979) 845-8300 for 24-hour support.
2. Select **Finder**, lick **Go**, and select **Connect to Server** (⌘K).



3. Depending on your affiliation with the College of Engineering, you will use one of the following paths to map your home drive:

**Undergrad Students:** smb://coe-fs.engr.tamu.edu/ugrads/(your NetID)

**Graduate Students:** smb://coe-fs.engr.tamu.edu/grads/(your NetID)

**Staff:** smb://coe-fs.engr.tamu.edu/staff/(your NetID)

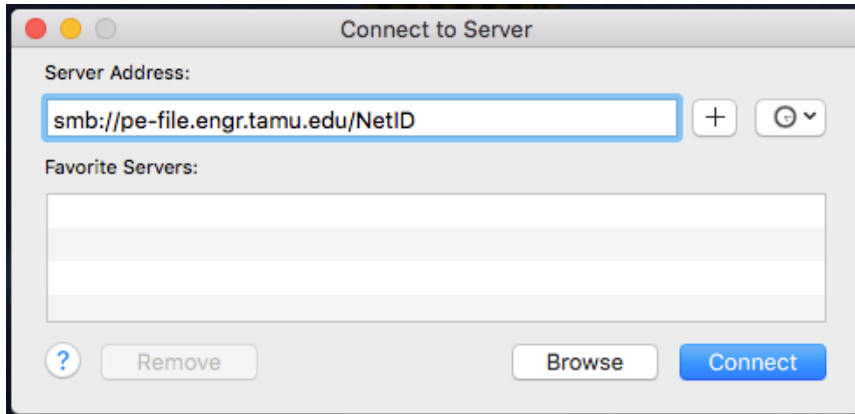
**Faculty:** smb://coe-fs.engr.tamu.edu/faculty/(your NetID)

The shares drive mappings are as follows:

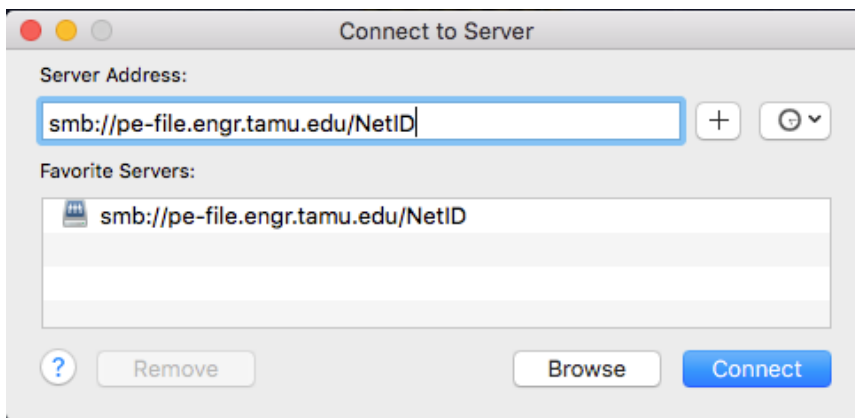
**ENGR:** smb://coe-fs.engr.tamu.edu/ENGR

**StudentShares:** smb://coe-fs.engr.tamu.edu/StudentShares

**Research:** smb://coe-fs.engr.tamu.edu/Research



4. Click the plus (+) symbol to add your home folder to the **Favorite Servers** list.



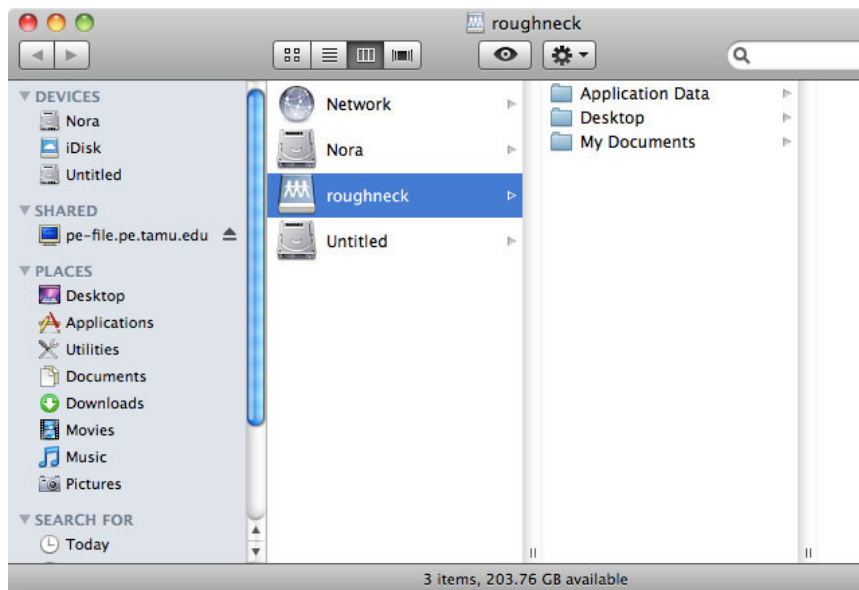
5. Select **Registered User** and type in **AUTH\**(your NetID) and password to log in.



6. Check the box **Remember this password in my keychain** to store your login for the server.



7. Now you should have access to all of your network files as shown below.



**Post only school-related files on the file server (i.e., into your H:\My Documents or Desktop folders and anywhere on S:\ drive.) Any movies, music or other non-school-related files are subject to unannounced deletion.**